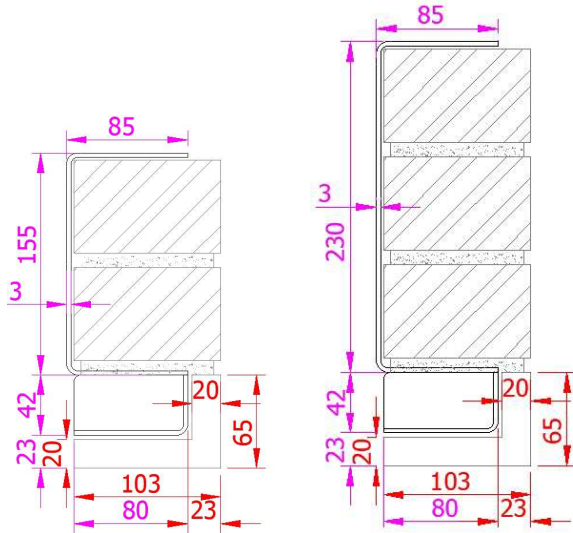


Brick slip lintels

L section range medium duty 65 x 103 mm

Section at span:



C 65-103 / H215

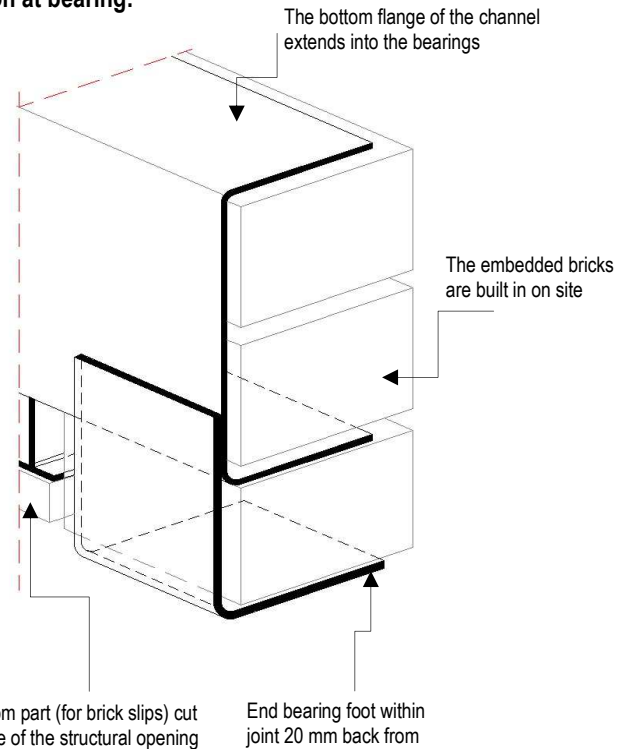
Lintel section properties

Ixx	682.0	cm ⁴
Zxx	82.3	cm ³
Weight	10.3	Kg/m
Area	12.8	cm ²
Ryy	3.06	cm

Lintel load Capacity Table

Opening Span	Lintel Length	Safe Load kN
600	900	42.0
750	1050	42.0
900	1200	42.0
1050	1350	42.0
1200	1500	42.0
1350	1650	42.0
1500	1800	42.0
1650	1950	42.0
1800	2100	38.9
1950	2250	35.9
2100	2400	33.4
2250	2550	31.1
2400	2700	29.2
2550	2850	27.5
2700	3000	26.0
2850	3150	24.6
3000	3300	23.4

Section at bearing:



C 65-103 / H290

Lintel section properties

Ixx	1505.6	cm ⁴
Zxx	134.7	cm ³
Weight	12.1	Kg/m
Area	15.1	cm ²
Ryy	3.03	cm

Lintel load Capacity Table

Opening Span	Lintel Length	Safe Load kN
600	900	55.0
750	1050	55.0
900	1200	55.0
1050	1350	55.0
1200	1500	55.0
1350	1650	55.0
1500	1800	55.0
1650	1950	55.0
1800	2100	55.0
1950	2250	52.8
2100	2400	51.7
2250	2550	49.1
2400	2700	45.0
2550	2850	43.2
2700	3000	41.0
2850	3150	37.0
3000	3300	35.6

This section uses a CS or CM lintel with an additional angle to support a 65 mm high x 103mm soffit. Other dimensions to suit different size bricks also available.

The section provides a bearing on the bottom flange with second bearing at the "foot".

Default material stainless steel SS370 (EN 1.4003) also available in stainless steel LDX2101 (EN 1.4162) or S250GD + Z600.

The safe working load SWL represent the maximum factored load uniform distributed load the lintel can carry. 102.5 mm width brickwork is taken as 2.2 ken/m².

Bearings; min 150mm each side, for high loads longer bearings may be needed, and bearing stresses should be checked